

PFI project for seismic reinforcement of the trunk water mains in Osaka City: Overall Plan (Summary)

1. Purpose of this project

Water Partner Osaka Kanro Co., Ltd will conduct the PFI project for seismic reinforcement of the trunk water mains in Osaka City for 8 years from FY2024 to FY2031 as a project operator for the purpose of enhancing the pace of the renewal of the trunk water mains while ensuring the quality through the proper implementation of the construction and other operations and reducing the costs, by exercising technical capabilities and ingenuity as a private operator.

2. Facilities covered by this project

- The facilities covered by this project are the following trunk water mains with a total length of approximately 38 km.

Table 1: Breakdown of the trunk water mains covered by this project

Water mains covered	Existing diameter (mm)	Extension (km)
Distribution main (cast iron pipe)	400~1067	20
Distribution main (ductile cast iron pipe)	400~1000	6
Transmission main (ductile cast iron pipes)	1200~1500	12
Total		38

3. Planned project period

From April 1, 2024 to March 31, 2032

4. Basic policy on implementing this project

Completion of the renewal of all water mains covered by this project through the realization of high quality, promptness and high efficiency

~Realization of the “Osaka Model”, a new water main renewal model through the public-private collaboration~

- To reliably complete the renewal of all water mains covered by this project through a reasonable and efficient implementation system by bringing together a high level of expertise.
- To provide safe and secure water to the City and its citizens through the quality management methods adopted by the industry’s leading companies.
- To promise to ensure high quality, enhance the pace and reduce the costs of the renewal through the pursuit of efficiency by the PFI project.



5. Project implementation system

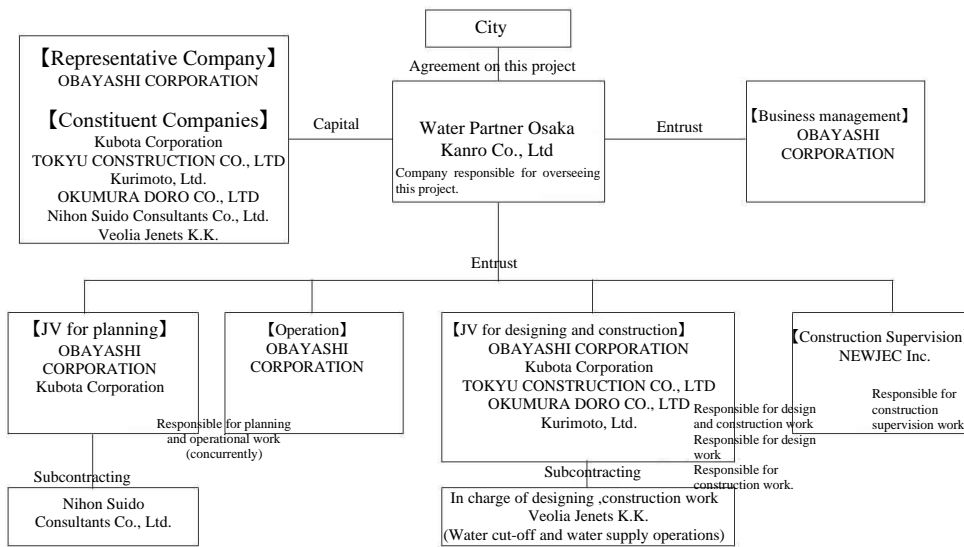


Chart 1: Implementation System

6. Water main renewal plan

Table 2: Expected business volume in Each Fiscal Year

FY	2024	2025	2026	2027	2028	2029	2030	2031	Total
Cumulative Achievement (%)	0	4	24	40	52	82	85	100	-
Business Volume (km)	0.0	1.7	7.4	6.1	4.9	11.5	1.2	5.6	38.2
Number of water mains for which construction has been completed	0	8	14	13	21	16	12	14	98
Business volume (km) *Extension of the water mains	0.2	4.1	6.6	7.4	10.4	6.7	2.3	0.4	38.2

*In this document, the lengths are given in kilometers (rounded to the nearest 10 meters), so the totals in this document may not match the actual totals.